

# City of Flushing - 1 Precinct Map



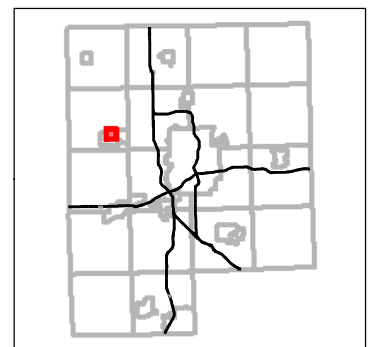
Genesee County GIS Department  
 Web: [www.gc4me.com/departments/gis](http://www.gc4me.com/departments/gis)  
 Email: [gis@co.genesee.mi.us](mailto:gis@co.genesee.mi.us)  
 Phone: (810) 257-3163



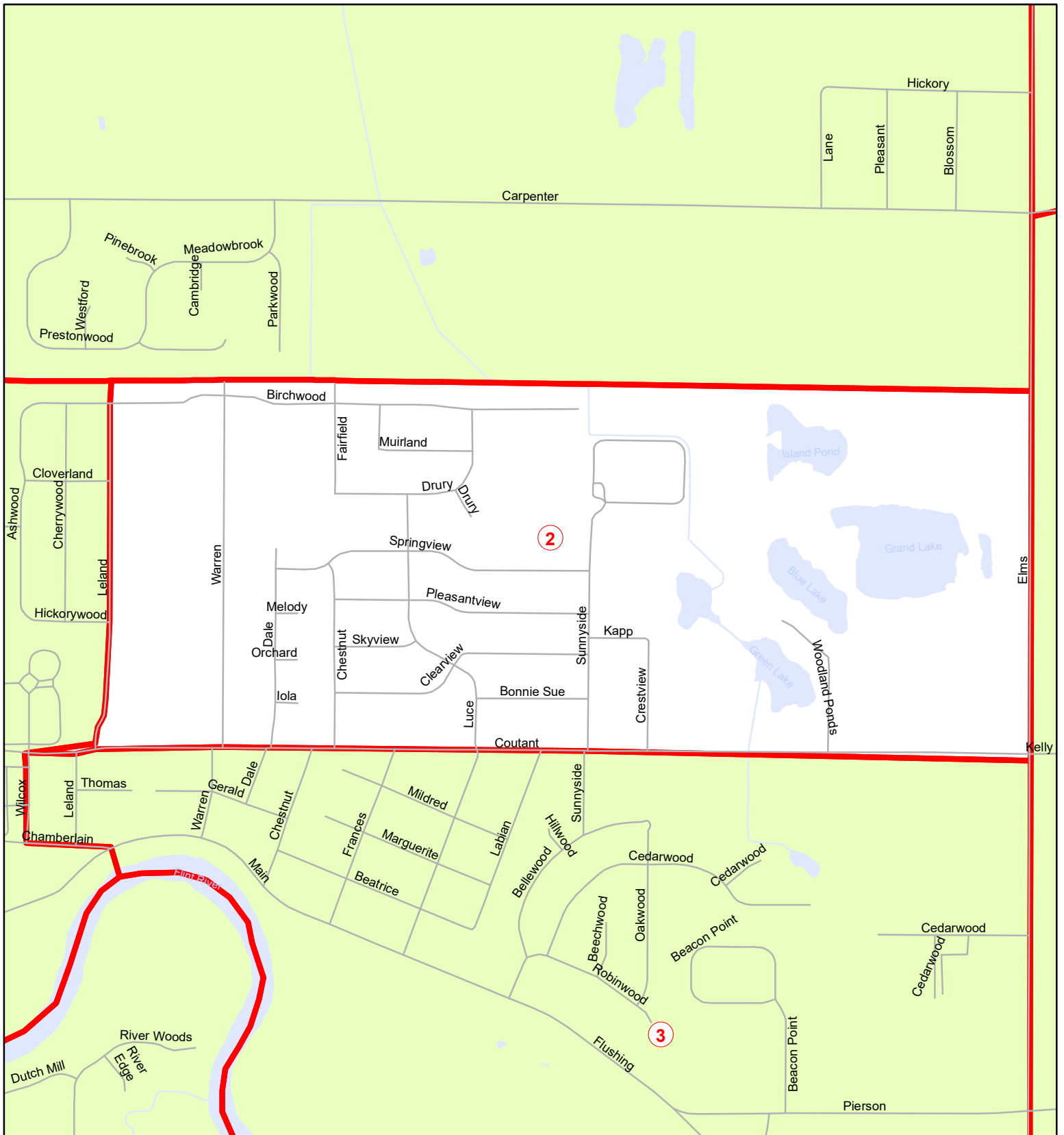
## Legend

- 1 Precinct Number
- Precinct Boundaries
- Streets
- Hydrography

Date: 2/27/2018



**THIS MAP IS FOR GENERAL INFORMATIONAL PURPOSES ONLY**  
 The information provided on this map has been compiled from a variety of public records and data sources. Although it is believed to be reliable, its accuracy, completeness, or fitness for use is not warranted in any way. This map and any accompanying information is not a legally recorded document or survey and is not intended to be used as one. Genesee County assumes no liability for any claims arising from the use of this map.



# City of Flushing - 2 Precinct Map



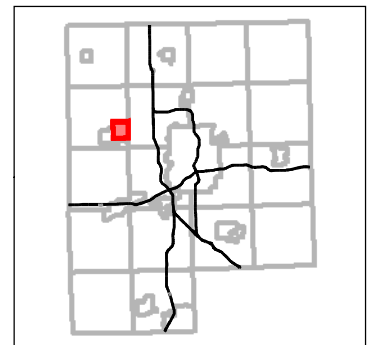
Genesee County GIS Department  
 Web: [www.gc4me.com/departments/gis](http://www.gc4me.com/departments/gis)  
 Email: [gis@co.genesee.mi.us](mailto:gis@co.genesee.mi.us)  
 Phone: (810) 257-3163



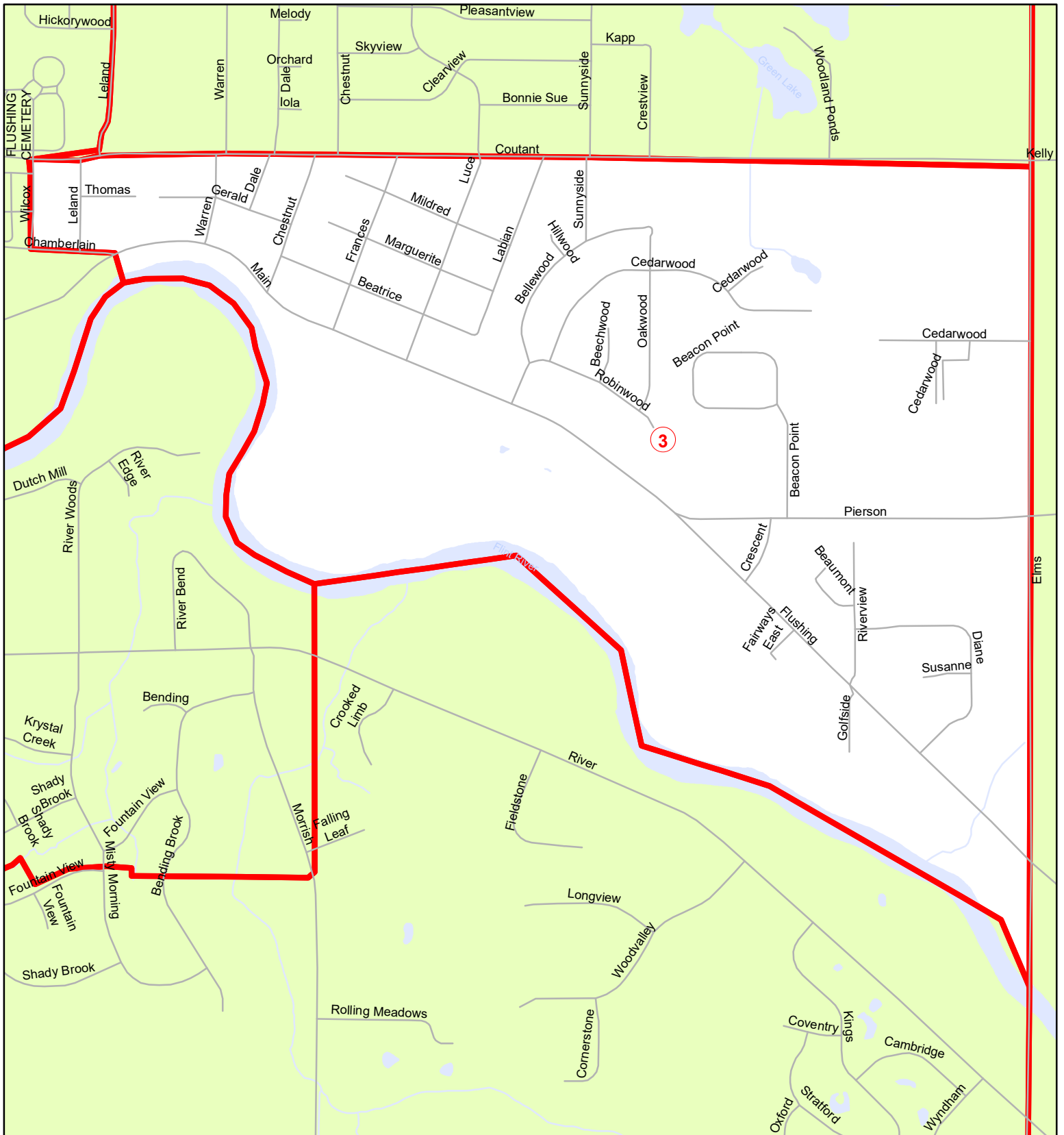
## Legend

- 1 Precinct Number
- Precinct Boundaries
- Streets
- Hydrography

Date: 2/27/2018



**THIS MAP IS FOR GENERAL INFORMATIONAL PURPOSES ONLY**  
 The information provided on this map has been compiled from a variety of public records and data sources. Although it is believed to be reliable, its accuracy, completeness, or fitness for use is not warranted in any way. This map and any accompanying information is not a legally recorded document or survey and is not intended to be used as one. Genesee County assumes no liability for any claims arising from the use of this map.



# City of Flushing - 3 Precinct Map



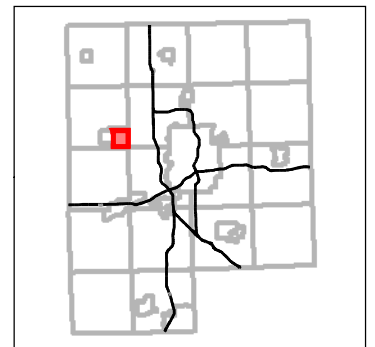
Genesee County GIS Department  
 Web: [www.gc4me.com/departments/gis](http://www.gc4me.com/departments/gis)  
 Email: [gis@co.genesee.mi.us](mailto:gis@co.genesee.mi.us)  
 Phone: (810) 257-3163



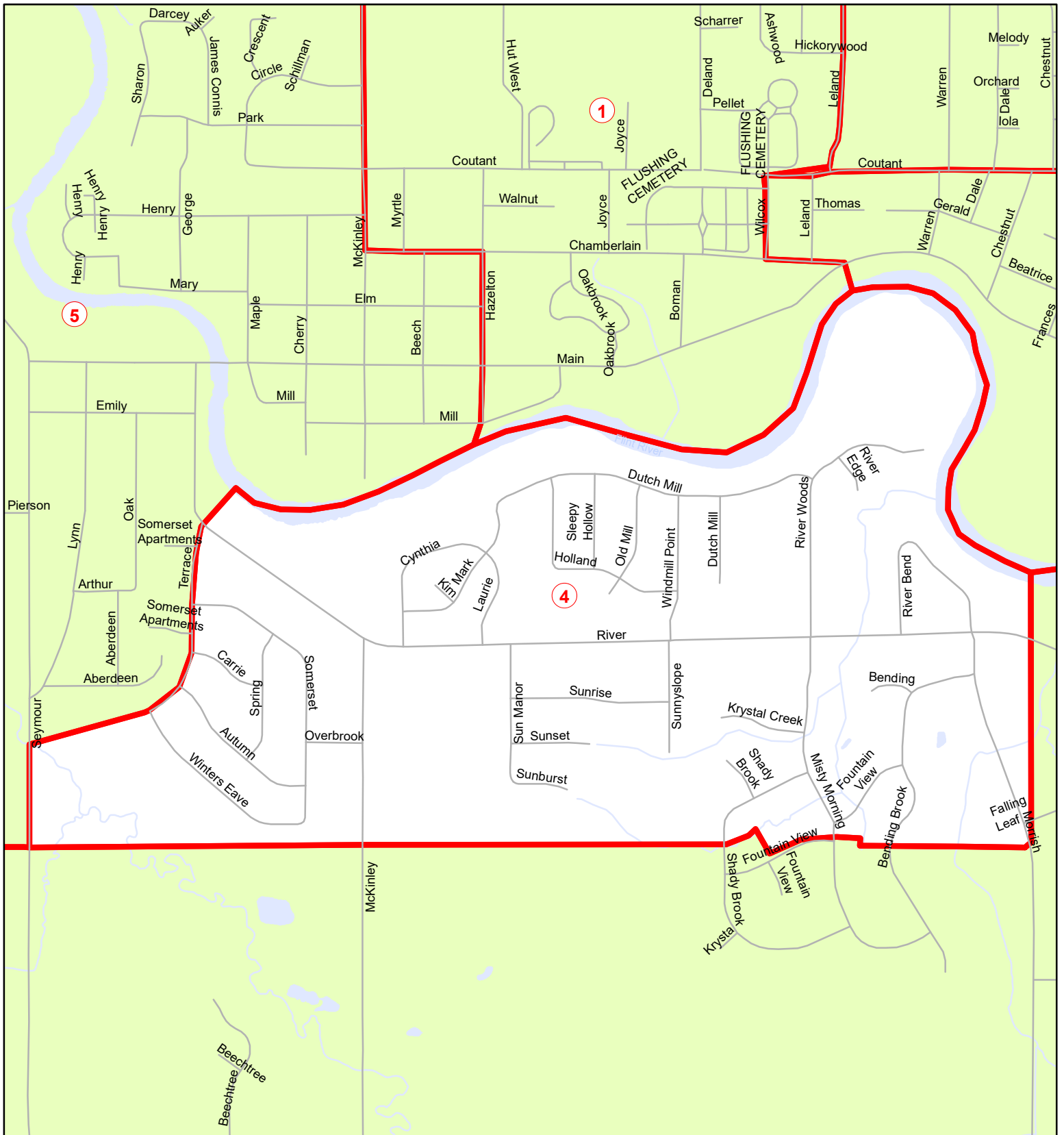
## Legend

- 1 Precinct Number
- Precinct Boundaries
- Streets
- Hydrography

Date: 2/27/2018



**THIS MAP IS FOR GENERAL INFORMATIONAL PURPOSES ONLY**  
 The information provided on this map has been compiled from a variety of public records and data sources. Although it is believed to be reliable, its accuracy, completeness, or fitness for use is not warranted in any way. This map and any accompanying information is not a legally recorded document or survey and is not intended to be used as one. Genesee County assumes no liability for any claims arising from the use of this map.



# City of Flushing - 4 Precinct Map



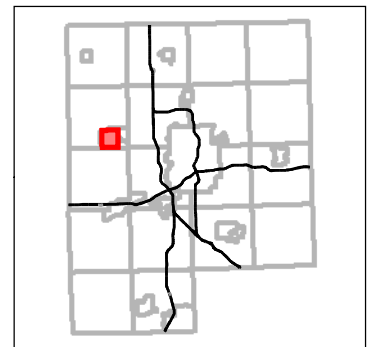
Genesee County GIS Department  
 Web: [www.gc4me.com/departments/gis](http://www.gc4me.com/departments/gis)  
 Email: [gis@co.genesee.mi.us](mailto:gis@co.genesee.mi.us)  
 Phone: (810) 257-3163



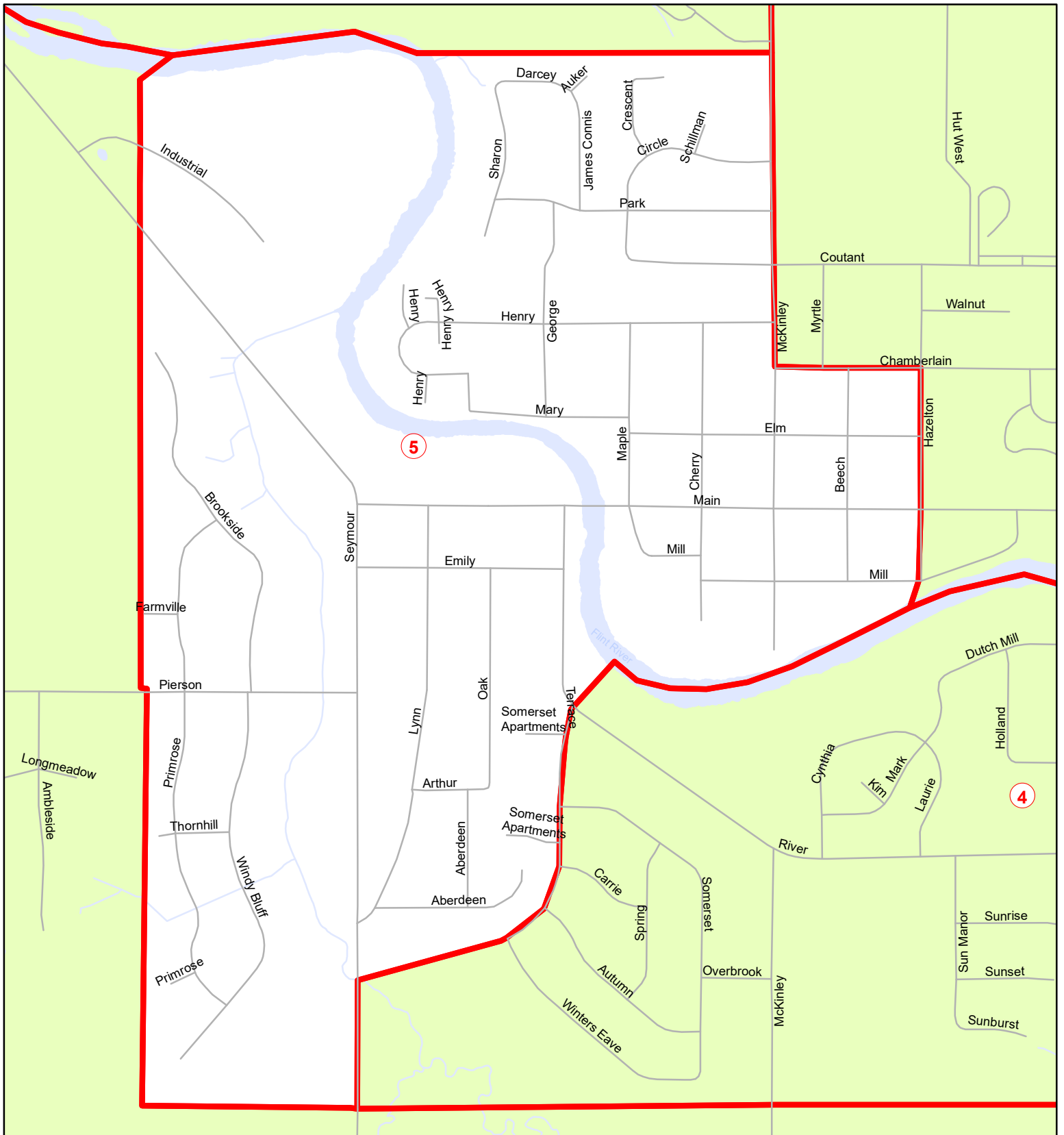
## Legend

- 1 Precinct Number
- Precinct Boundaries
- Streets
- Hydrography

Date: 2/27/2018



**THIS MAP IS FOR GENERAL INFORMATIONAL PURPOSES ONLY**  
 The information provided on this map has been compiled from a variety of public records and data sources. Although it is believed to be reliable, its accuracy, completeness, or fitness for use is not warranted in any way. This map and any accompanying information is not a legally recorded document or survey and is not intended to be used as one. Genesee County assumes no liability for any claims arising from the use of this map.



# City of Flushing - 5 Precinct Map



Genesee County GIS Department  
 Web: [www.gc4me.com/departments/gis](http://www.gc4me.com/departments/gis)  
 Email: [gis@co.genesee.mi.us](mailto:gis@co.genesee.mi.us)  
 Phone: (810) 257-3163

**THIS MAP IS FOR GENERAL INFORMATIONAL PURPOSES ONLY**  
 The information provided on this map has been compiled from a variety of public records and data sources. Although it is believed to be reliable, its accuracy, completeness, or fitness for use is not warranted in any way. This map and any accompanying information is not a legally recorded document or survey and is not intended to be used as one. Genesee County assumes no liability for any claims arising from the use of this map.



## Legend

- 1 Precinct Number
- Precinct Boundaries
- Streets
- Hydrography

Date: 2/27/2018

