

Kace and Network & Storage Infrastructure

IT Core-Tech Group Presentation

10.25.2012

Kace Management Systems

- K1000 Management Appliance
 - PC and Device Inventory
 - Software Installation and Distribution
 - Patch Management & Deployment
 - Service Desk Management
 - Asset Management
- K2000 Deployment Appliance
 - System Imaging
 - User State Migration
- Meets Strategic Objectives I.B.1, II.A.2, III.C.2, IV.A.2

Kace Features 1 of 4

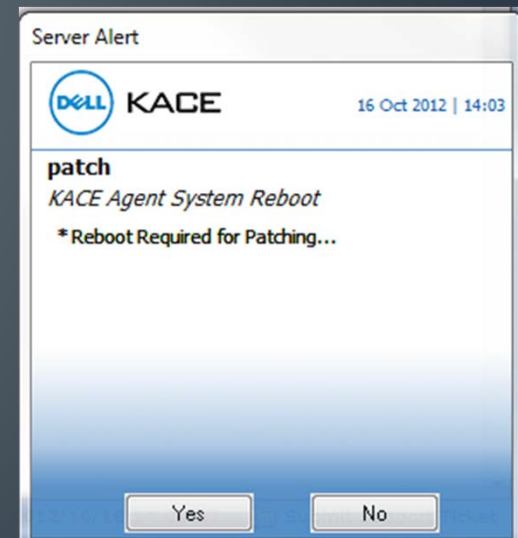
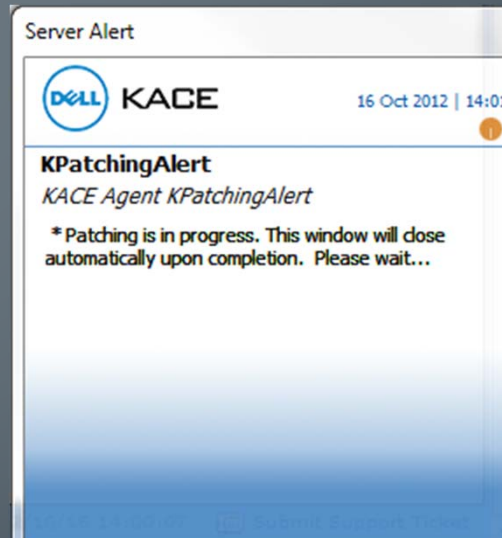
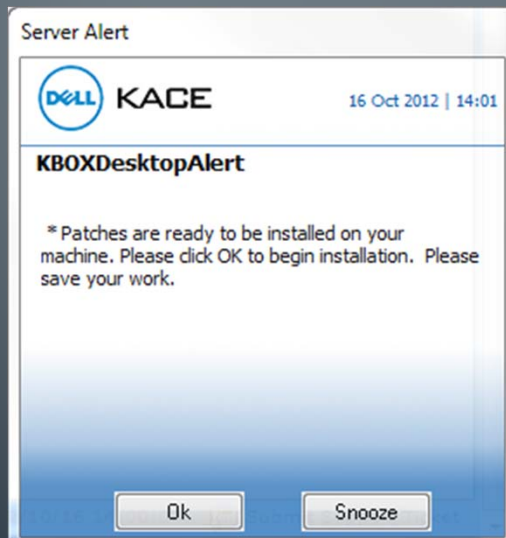
- PC and Device Management
 - All workstations added to Kace
 - Displays machine hardware
 - View installed software
 - Machine History

History	
Time	Changes
2012/10/09 14:14:44	Software item Google Update Helper 1.3.21.115 removed from inventory.
2012/10/09 14:14:44	Found software item Google Update Helper 1.3.21.123 in inventory.
2012/09/18 12:36:27	Created new Computer record.

- Software Installation and Management
 - Allows IT to deploy software remotely
 - Standardized software offerings across workstations

Kace Features 2 of 4

- Patch Management and Deployment
 - Provides mechanism for patching Windows OS
 - Allows application Patching (Adobe, Java, Office, etc...)

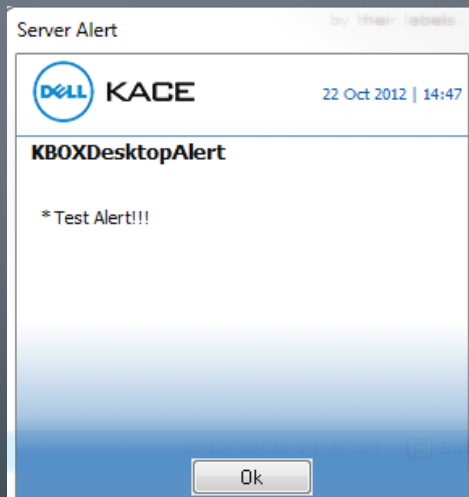


Kace Features 3 of 4

- **Service Desk Management**
 - Ticket submission and tracking
 - Knowledge base
 - Automatic ticket escalation and routing
 - Remote Control
- **Asset Management**
 - Track hardware within environment (Printers, Phones, Licenses, etc...)
 - Assign assets to users

Kace Features 4 of 4

- Power Management
- IT Security & Audit Enforcement
- Administrative Alerts
- IT Reporting and Dashboards
- Client Notification / Alerting



SAN Overview

- High Availability
 - Active/Active controllers
 - No single point of hardware failure
- 40 TB Useable Space (20TB already allocated)
 - Easily expandable
- Storage Performance Increase
 - Tiered Storage
 - 8Gb backend connectivity to servers
- Replication Capabilities

Core Network & Servers Overview

- Redundant High-speed Core Network Switches
 - 10Gb connectivity for Servers and Switch Uplinks
 - 40Gb Core Network interconnects
- High Density Server Blade Chassis
 - 4x 8-core 2GHz, 96GB RAM servers
 - 4 of 16 slots used for initial servers
 - Virtualize all existing hardware
 - High Speed Connectivity
 - 2x 10Gb connectivity back to Network Core
 - 2x 8Gb Fibre connectivity to Storage

Additional Notes

- New backup software
 - Capable of taking multi-point snapshots throughout the day
 - Quicker fulfillment for file and email restoration requests
- Microsoft Licensing
 - Update Client Access Licenses to current numbers and versions
 - Update all server software to latest version
 - Windows Server 2008/2012
 - Exchange Server 2010/2012
 - SQL Server 2008/2012
- First steps in Creating Off-site DR location and plan
- Meets Strategic Objectives I.A.1, I.A.2, I.B.2, I.B.3, & III.C.2