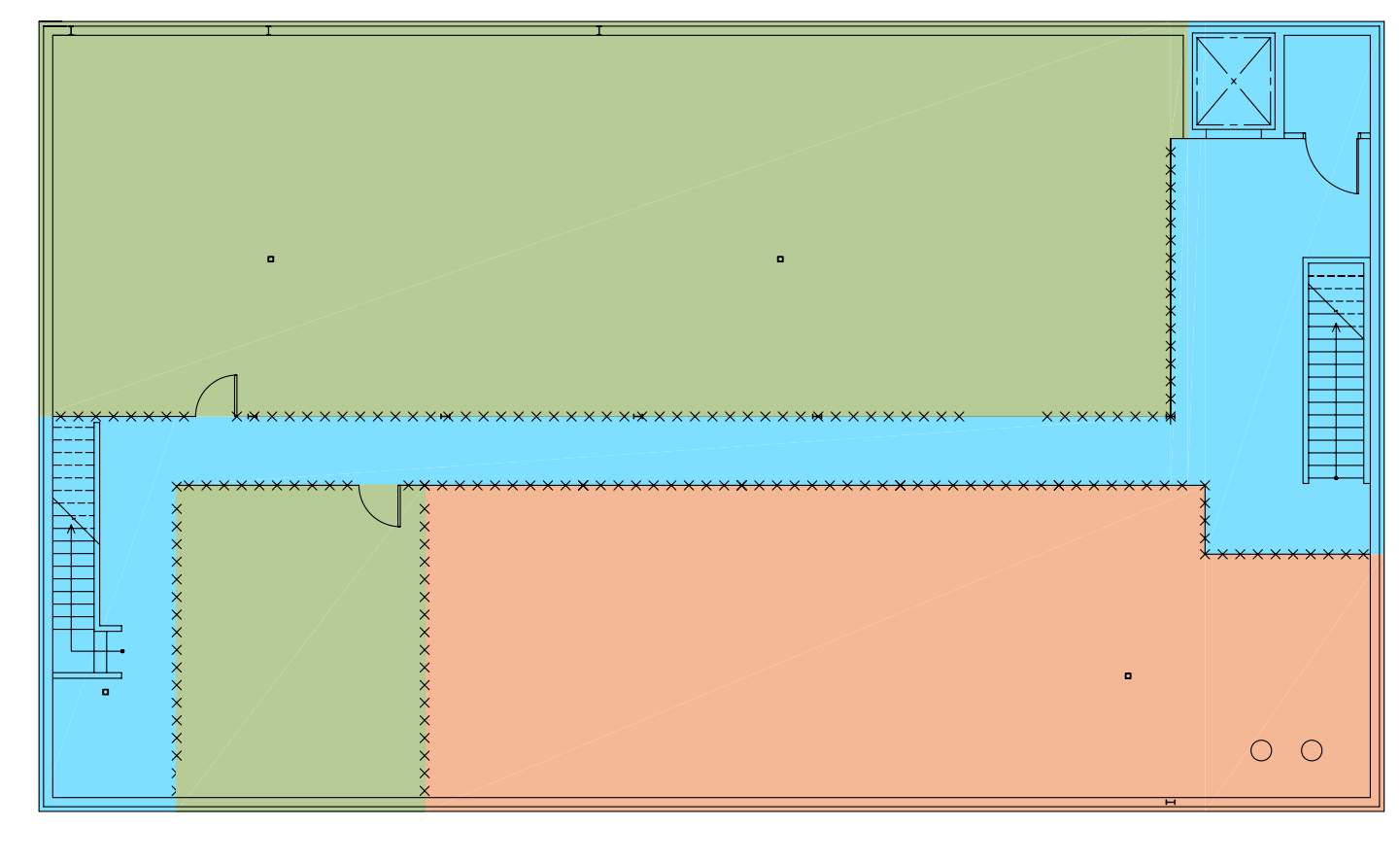


INTERIOR RESTORATION FOR  
**McCree Courts & Human Services Center**  
 630 S. SAGINAW STREET FLINT, MICHIGAN

PROJECT NO. 1002100  
 DATE OCTOBER 24, 2010  
 AS BUILT DATE  
 DRAWN BY DW-JB  
 CHECKED BY S.N.K.  
 SCALE AS NOTED  
 REVISION DATE

SHEET NO.  
 OF



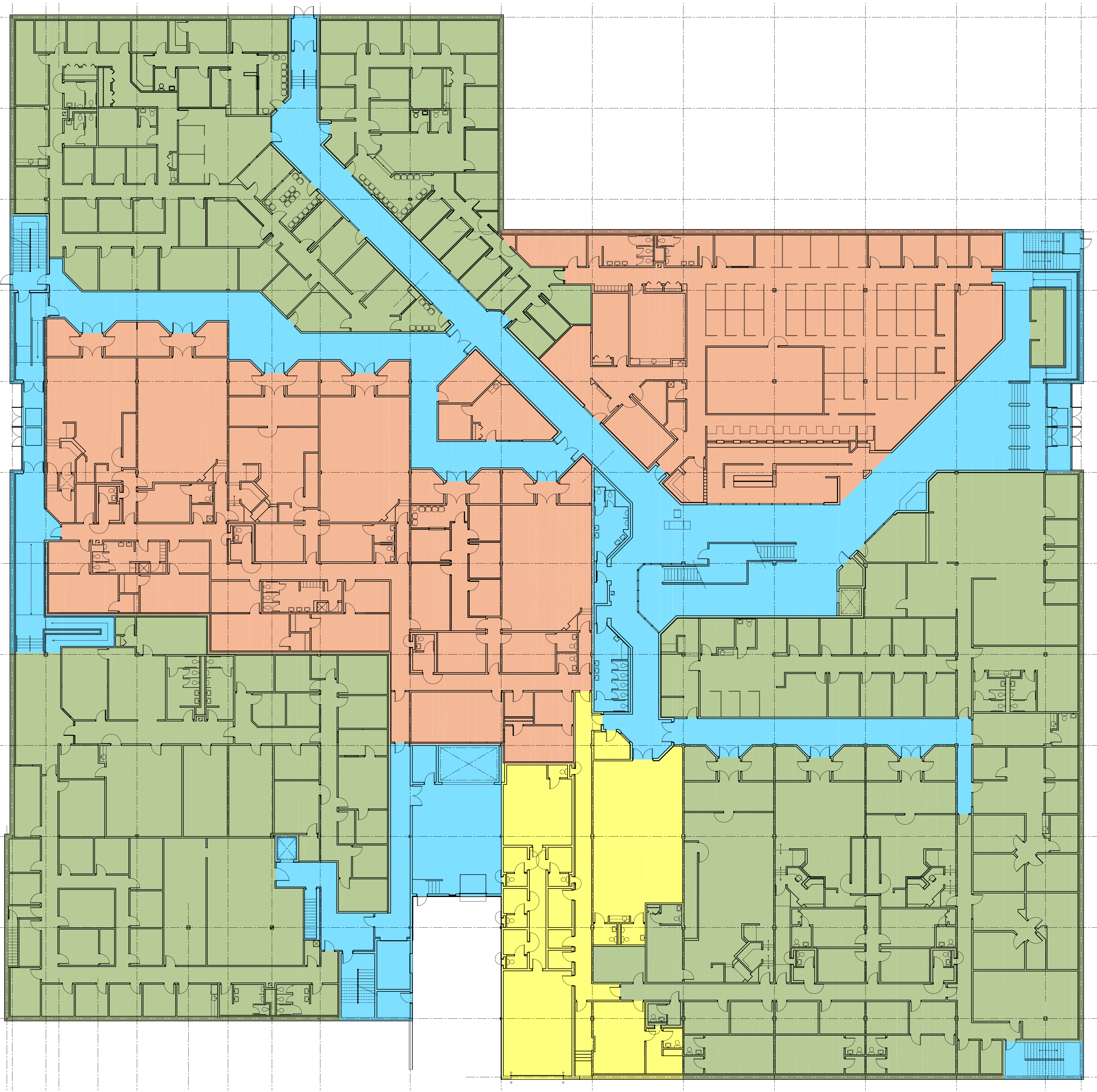
**BASEMENT PLAN**

**TENANT LEASE SPACE ALLOCATION PLAN**

68th DISTRICT COURT	1584 SQ. FT.
GENESEE COUNTY	2,793 SQ. FT.
COMMON AREA	1,223 SQ. FT.
<b>TOTAL BASEMENT AREA</b>	<b>6900 SQ. FT.</b>

**TENANT LEASE SPACE ALLOCATION PLAN**

68th DISTRICT COURT	25,197 SQ. FT.
GENESEE COUNTY	45,647 SQ. FT.
68th / G.C. (SHARED AREA)	6,038 SQ. FT.
COMMON AREA	18,574 SQ. FT.
<b>TOTAL FIRST FLOOR BUILDING AREA</b>	<b>92,396 SQ. FT.</b>



**FIRST FLOOR PLAN**

