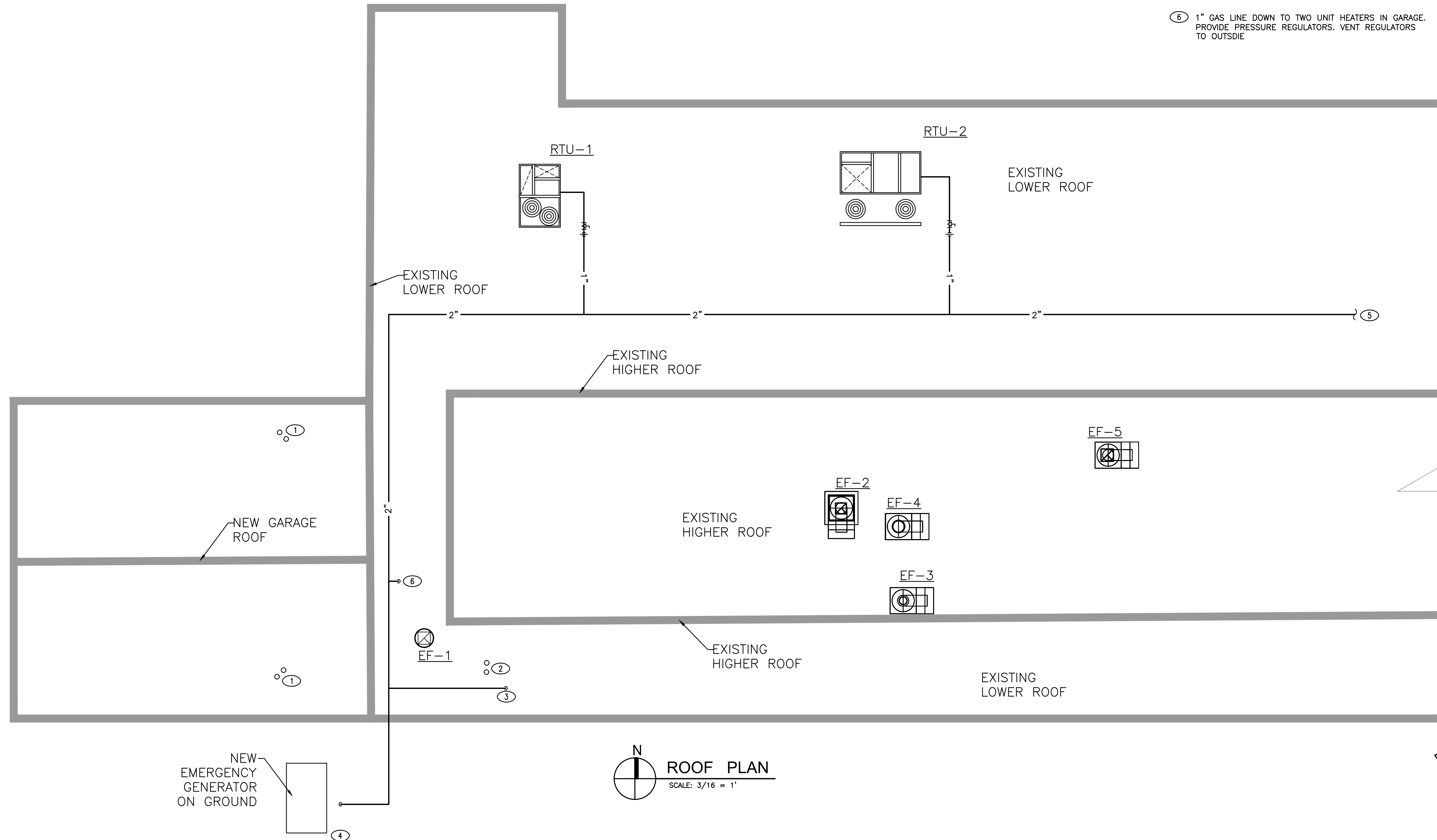


KEYED NOTES:

- ① 4" FLUE, 4" COMBUSTION AIR FOR UNIT HEATER UH-1
- ② 4" FLUE, 4" COMBUSTION AIR FOR HOW WATER HEATER DWH-1
- ③ 1" GAS LINE DOWN TO HOT WATER HEATER. PROVIDE PRESSURE REGULATOR
- ④ 1-1/2" GAS LINE DOWN TO GENERATOR. PROVIDE PRESSURE REGULATOR. SEE ELECTRICAL AND FOR EXACT LOCATION OF EMERGENCY GENERATOR
- ⑤ CONTRACTOR SHALL COORDINATE WITH GAS COMPANY TO INSTALL A NEW GAS METER AND RUN A 2"-LB PRESSURE LINE FROM NEW METER TO GAS CONSUMING EQUIPMENT. COORDINATE WITH GAS COMPANY FOR NEW METER LOCATION. APPROXIMATE DISTANCE FROM EXISTING BUILDING GAS SUPPLY TO FARTHEST GAS CONSUMING EQUIPMENT (EMERGENCY GENERATOR) IS APPROXIMATELY 800-FT. CONTRACTOR MUST FIELD VERIFY EXACT DISTANCE BEFORE BIDDING THE PROJECT. NO ADDITIONAL COMPENSATION WILL BE GIVEN FOR ADDITIONAL PIPE LENGTHS
- ⑥ 1" GAS LINE DOWN TO TWO UNIT HEATERS IN GARAGE. PROVIDE PRESSURE REGULATORS. VENT REGULATORS TO OUTSIDE



Jayazehi
FAYAZ DIN
ENGINEER
No. 52454

