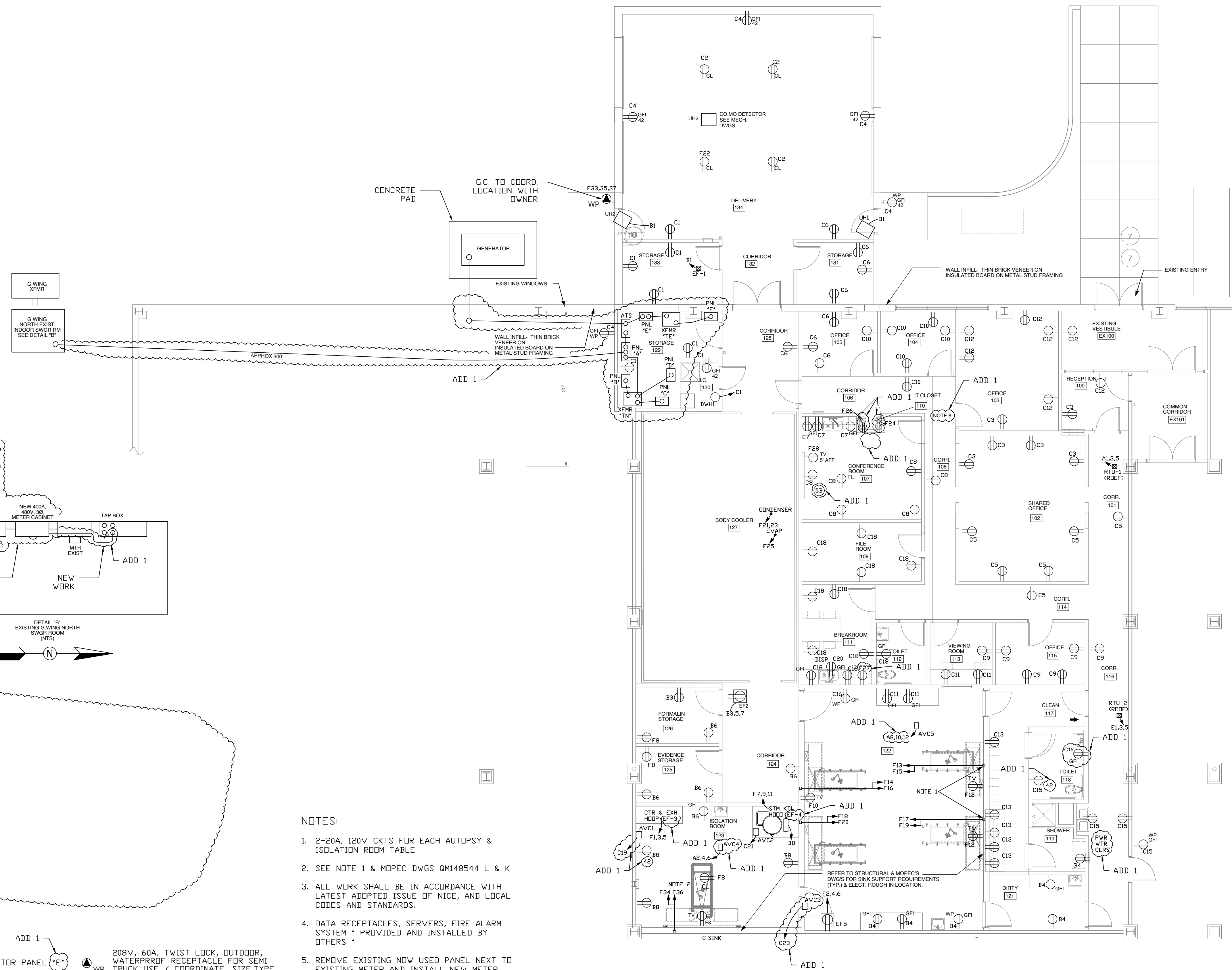


EXISTING PARKING LOT



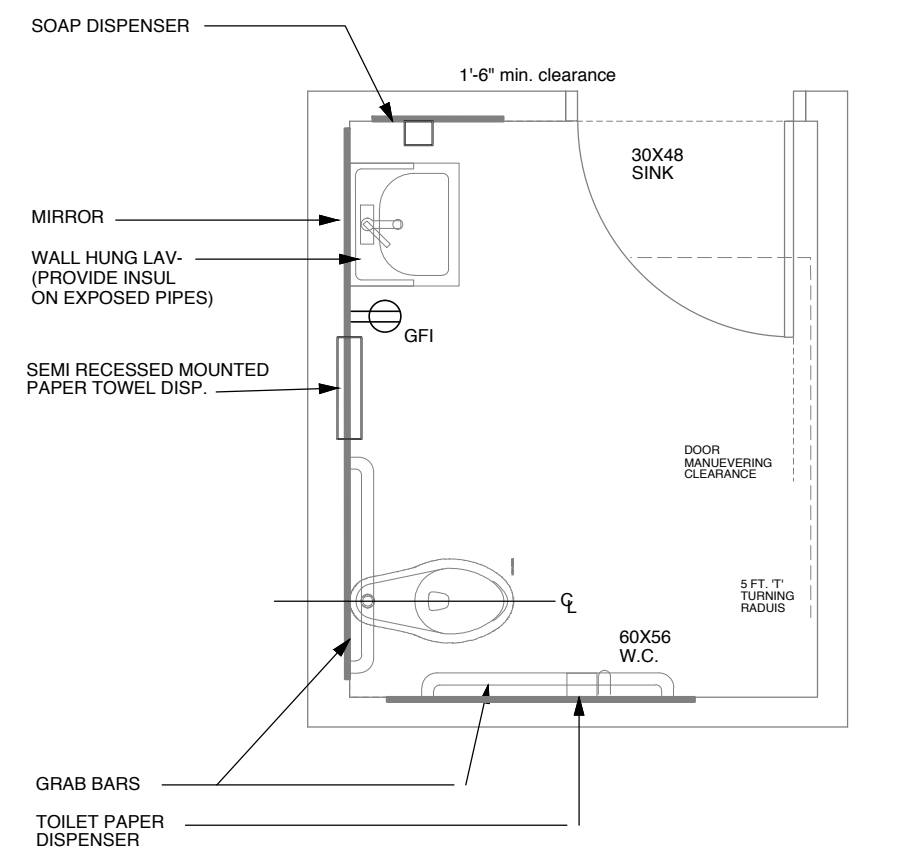
NOTES:

- 2-20A, 120V CKTS FOR EACH AUTOPSY & ISOLATION ROOM TABLE
- SEE NOTE 1 & MOPEC DWGS QM148544 L & K
- ALL WORK SHALL BE IN ACCORDANCE WITH LATEST ADOPTED ISSUE OF NICE, AND LOCAL CODES AND STANDARDS.
- DATA RECEPTACLES, SERVERS, FIRE ALARM SYSTEM * PROVIDED AND INSTALLED BY OTHERS *
- REMOVE EXISTING NOW USED PANEL NEXT TO EXISTING METER AND INSTALL NEW METER FOR MORGUE. SAME FOR NEW 400A DISCONNECT. OR REMOVE TWO NON USED PANELS IN ROOM TO MOUNT METER & DISC SIDE BY SIDE.
- ALL ELECTRICAL WALL AND ROOF PENETRATIONS INCLUDING RECEPTS, CONDUITS, CABLE IN CONDUITS, ET. FROM/TO ROOMS 127, 126, 125, 124, 123, TO AREA OUTSIDE THESE ROOMS MUST BE SEALED NOT ONLY FOR FIRE BUT AIR LOSS. SEE MECHANICAL AND ARCHITECTURAL DRAWINGS DETAILS.
- CIRCUITS BEGINNING WITH 'E' AND 'F' ARE ON GENERATOR PANELS
- IT CLOSET SHALL BE 'FIRED STOPPED' AFTER COMPLETION OF POWER & DATA WORK

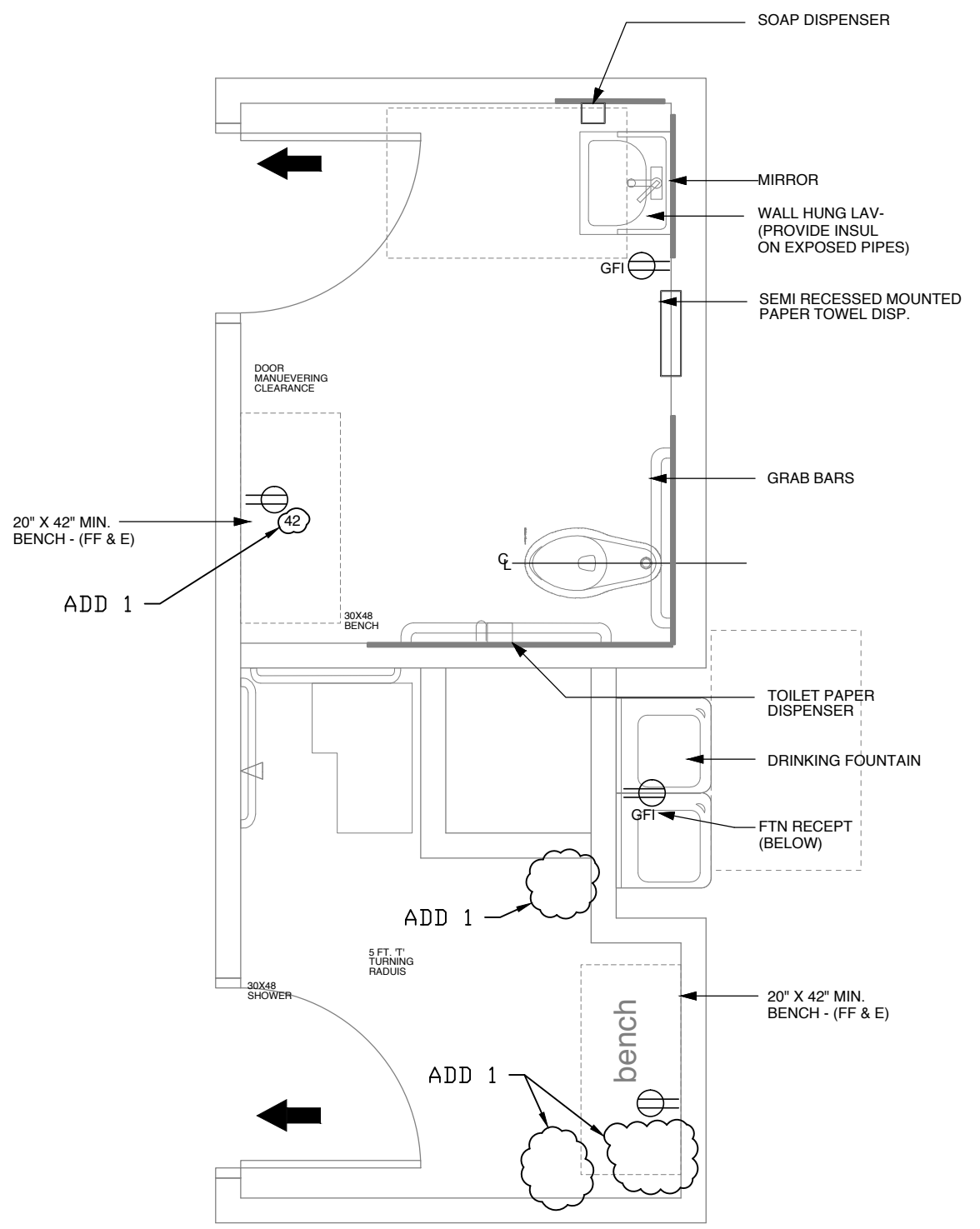
FLOOR PLAN
scale: 3/16" = 1'-0"

ELECTRICAL SYMBOLS

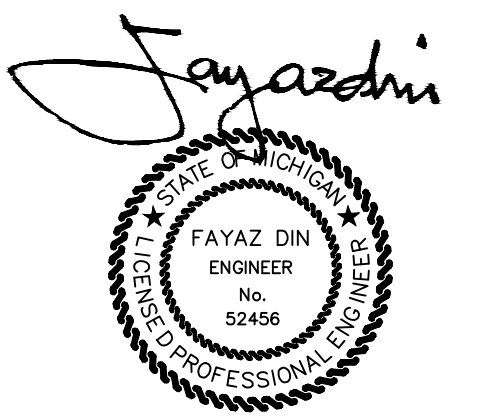
- | | |
|---|--|
| <p>RECEPTACLES (& LOADS) ON GENERATOR PANEL 'E'</p> <p>CEILING MTD 120V/20A, DUPLEX RECEPTACLE FOR GARAGE DOOR OPENER, ETC.</p> <p>MONOXIDE DETECTOR</p> <p>120V, 20A, DUPLEX FLOOR RECEPTACLE</p> <p>120V, 20A, DUPLEX COMMERCIAL, SPEC GRADE RECEPTACLE</p> <p>RECEPTACLES & LOADS ON GENERATOR PANEL 'F'</p> | <p>208V, 60A, TWIST LOCK, OUTDOOR, WATERPROOF RECEPTACLE FOR SEMI TRUCK USE. (COORDINATE, SIZE, TYPE & FIND A LOCATION W/DOWNER)</p> <p>OUTLET - QUAD</p> <p>OUTLET 42" AFF</p> <p>DUPLEX RECEPT HIGH ON WALL FOR TV. SEE DETAILS ON E-3.</p> <p>DUPLEX WATERPROOF RECEPTACLE</p> <p>120V, 20A, DUPLEX COMMERCIAL, SPEC GRADE GFCI RECEPTACLE.</p> <p>OUTLET AT 'SMART BOARD' LOCATION</p> |
|---|--|



2 ENLARGED TOILET ROOM
A-2.0 SCALE: 1/2" = 1'-0"



3 ENLARGED TOILET ROOM
A-2.0 SCALE: 1/2" = 1'-0"



23880 MIDDLEBELT RD. SUITE 2022
FARMINGTON HILLS, MI 48336
PHONE: (248) 657-2466
FAX: (248) 693-7072

DIN ENGINEERING