

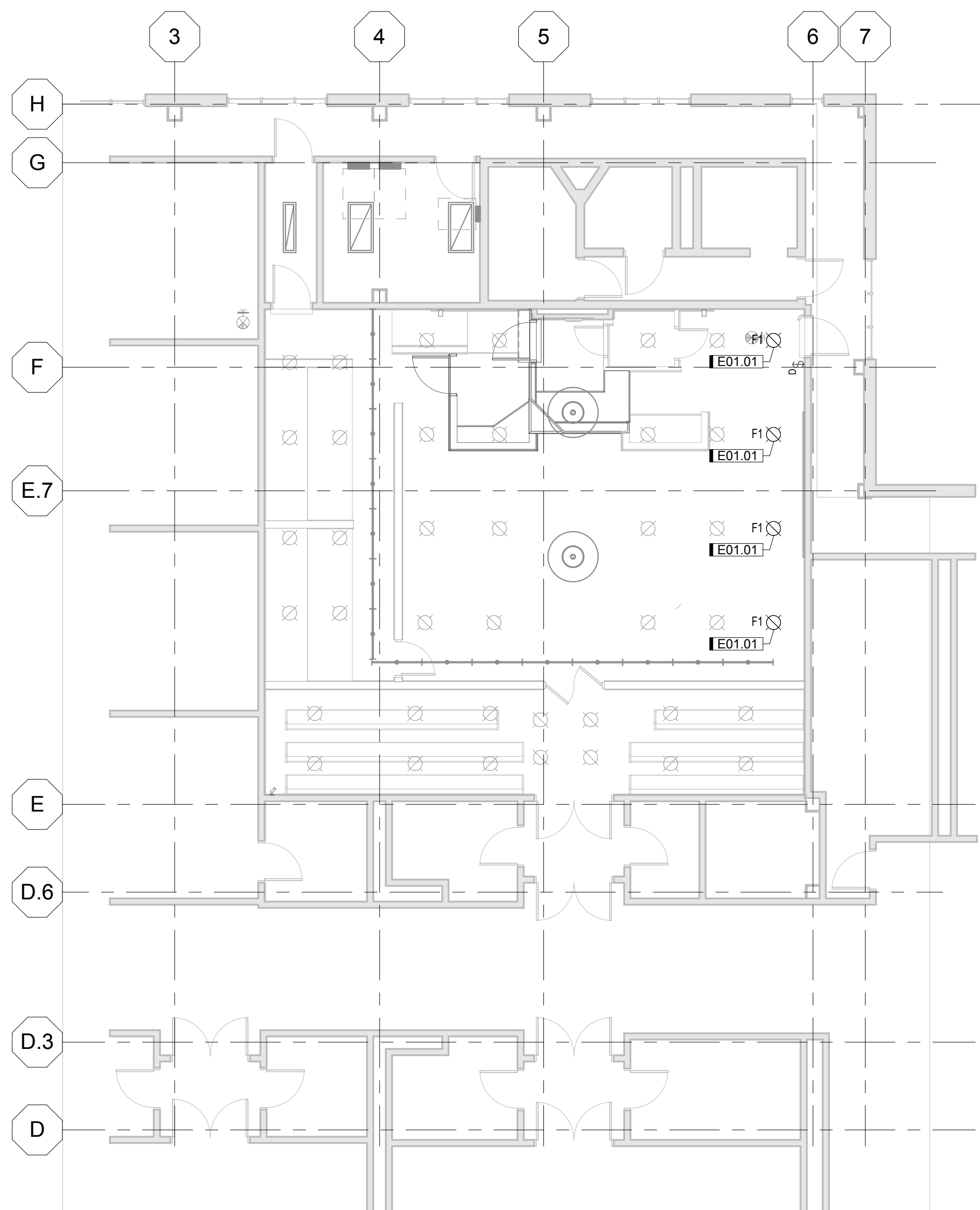
ELECTRICAL PLAN GENERAL NOTES:

- A. PROVIDE PATHWAY FOR ALL TECHNOLOGY SYSTEMS. COORDINATE WITH TECHNOLOGY PROVIDERS.
- B. EXPOSED CABLING TO BE IN CONDUIT. ABOVE CEILING AND IN WALLS USE CABLE TRAY AND OPEN CABLING FOR TECHNOLOGY CABLES.
- C. ALL POKE THRU TO HAVE (2) DUPLEX RECEPTACLES AND (2) DATA CONNECTIONS. PROVIDE ADDITIONAL DEVICES NEEDED TO SERVE THE CONNECTIONS REQUIRED BY TECHNOLOGY. COORDINATE REQUIREMENTS WITH TECHNOLOGY PROVIDER.

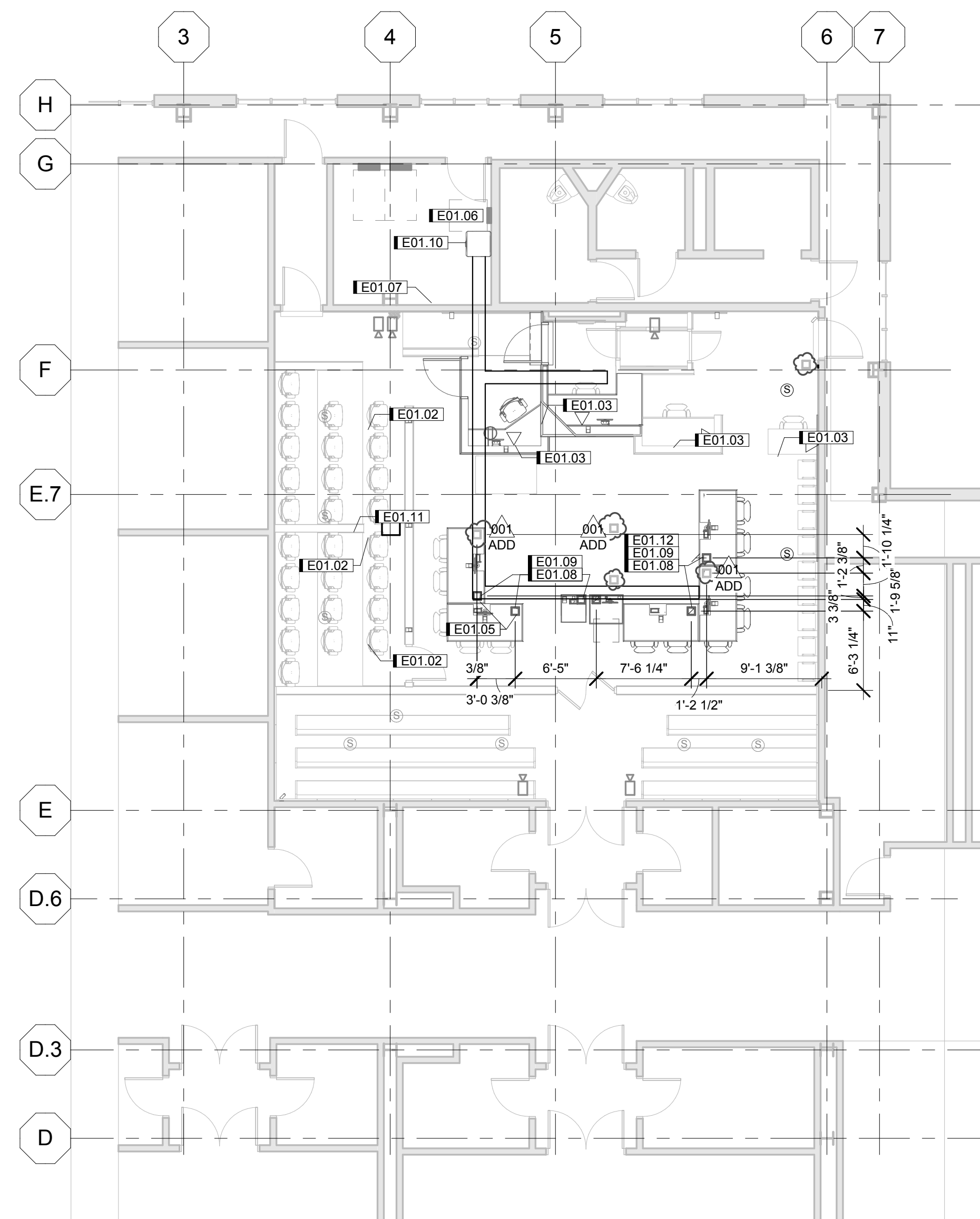
KEYNOTE LEGEND	
KEY	NOTE
E01.01	F1 - 8" LED LIGHT FIXTURE, DIMMABLE 3500K, 1200 LUMENS. CONNECT TO EXISTING CIRCUIT AND PROVIDE DIMMING CONTROL.
E01.02	PROVIDE PATHWAY FOR COURT RECORD MICROPHONES.
E01.03	PROVIDE 2 DATA AND 2 PHONE AT THIS LOCATION.
E01.05	PROVIDE 2 RJ45 JACKS FOR MICROPHONES.
E01.06	EXISTING POWER PANEL. SPARE CIRCUIT TO PROVIDE NEW POWER. PROVIDE BREAKER IN EXISTING PANEL FOR NEW CIRCUITS.
E01.07	PROVIDE 4" W X 2" H WIRE BASKET LOCATED IN CEILING FLOOR BELOW.
E01.08	PROVIDE HUBBELL SYSTEMONE 8" RECESSED POKE-THROUGH. PROVIDE DUPLEX RECEPTACLE. COORDINATE WITH TECHNOLOGY DRAWINGS AND PROVIDE FOR AV CONNECTION REQUIREMENTS TO BE PROVIDED AS PART OF POKE-THROUGH.
E01.09	CONNECT FLOOR BOX TO A SPARE CIRCUIT IN EXISTING PANEL.
E01.10	CONNECT TO FOUR (4) SPARE CIRCUITS IN EXISTING PANEL.
E01.11	CONNECT CEILING PROJECTOR TO A SPARE CIRCUIT IN EXISTING PANEL. PROVIDE DATA CONNECTION FOR PROJECTOR.
E01.12	PROVIDE 3 RJ45 JACKS FOR MICROPHONES.

Courtroom Upgrades

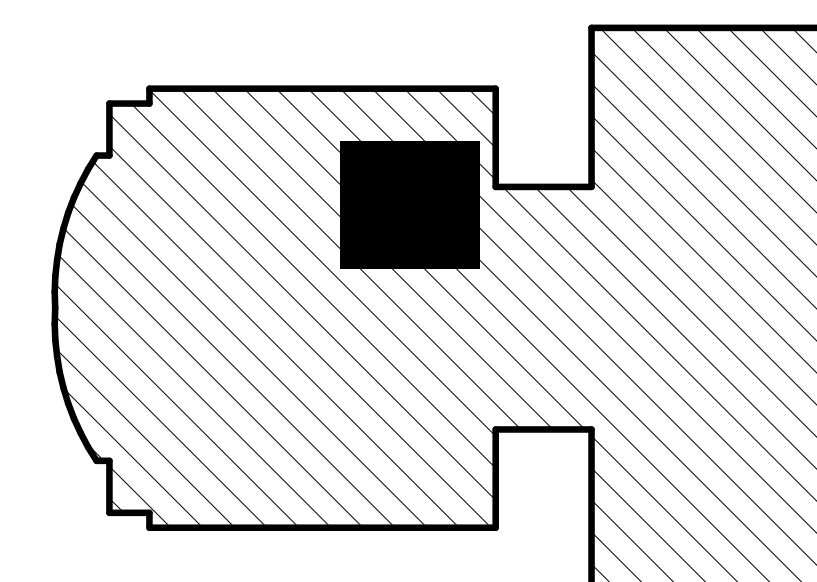
Genesee County Purchasing Department



1 COURTROOM LIGHTING PLAN
1/8" = 1'-0"



2 COURTROOM POWER PLAN
1/8" = 1'-0"



KEY PLAN



PRELIMINARY - NOT FOR CONSTRUCTION

SEAL

ADD 001	10/19/2016	ADD-001

DRAWN	AJF
APPROVED	DMT
ISSUED FOR	Construction
DATE	10/10/2016
FIELD BOOK	

PROJECT NO.: 8151060

ELECTRICAL FLOOR PLANS

E101