



**BOARD COORDINATOR
GENESEE COUNTY BOARD OF COMMISSIONERS**

1101 BEACH STREET, ROOM 312
FLINT, MICHIGAN 48502

TELEPHONE: (810) 257-3020
FAX: (810) 257-3008

AMY ALEXANDER
COORDINATOR

NEWS RELEASE

FOR IMMEDIATE RELEASE: September 1, 2016
CONTACT PERSON: Ken Koleda, GIS Director
(810) 257-3163

Genesee County Geographic Information System Department Announces:
FetchGIS a New Online Mapping System

The Genesee County GIS Department is pleased to announce the availability of a new and greatly expanded online mapping capability at www.gc4me.com/departments/gis/.

Genesee County has developed a new web and mobile mapping service that provides access to GIS data and land information. The Genesee County FetchGIS service offers an intuitive user experience with modern mapping and data discovery tools that make finding information easy.

The site offers access to multiple years of high resolution aerial imagery, basic parcel information, elevation contour data, and much more for free to all users. More advanced capabilities are available on a per transaction basis. However, beginning September 1st, 2016 the site will allow **free access** to all for a three month introductory period.

This site provides many useful and interesting capabilities for residents, realtors, surveyors, developers and others. Users will be able to easily and quickly research any location within the 640 square mile area of the County.

GIS Director Ken Koleda stated, "The web site provides the public with more mapping information than ever before and they can access as easily from a mobile device as on any PC". [END]



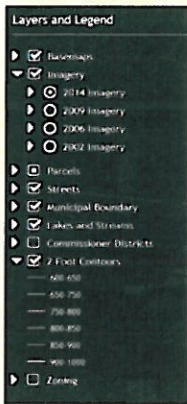
GENESEE COUNTY *NEW ONLINE MAPPING SITE*

Genesee County FetchGIS

Genesee County is pleased to announce our new web and mobile mapping service called FetchGIS. This service offers an intuitive user experience with modern mapping and data discovery tools that make finding information easy.



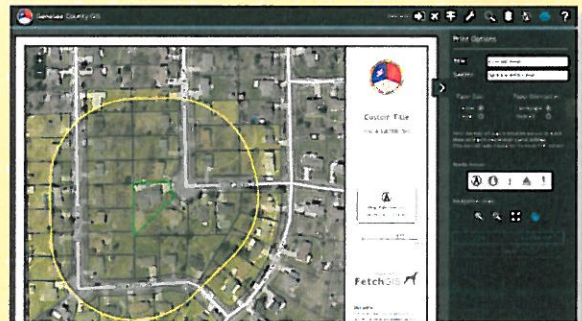
Standard Features



- Explore GIS data from Genesee County including parcels, multiple years of aerial imagery, elevation contours and more!
- Measurement options for lines and areas with multiple measure units, and point coordinates
- Advanced graphic markup including text and shapes with options for angle and distance units and graphic editing tools
- Display current location on map for GPS enabled devices
- Works on desktops, tablets and smartphones

Premium Functionality

- Access detailed land information for parcels
- Create custom maps, reports and notification lists with mailing labels
- Shareable map link with persistent graphic markups
- Premium functionality is offered on a fee per transaction basis so you are not committed to a subscription for only infrequent use



Free Trial of Premium: Beginning September 1, 2016 we will offer a 3 month free trial of all premium features, be sure to TRY IT OUT!



app.fetchgis.com/genesee
www.gc4me.com/departments/gis

