

Thetford Township - 1 Precinct Map



Genesee County GIS Department
 1101 Beach St., Room 210
 Flint, MI 48502
 Phone: (810) 257-3163 Fax: (810) 768-7954

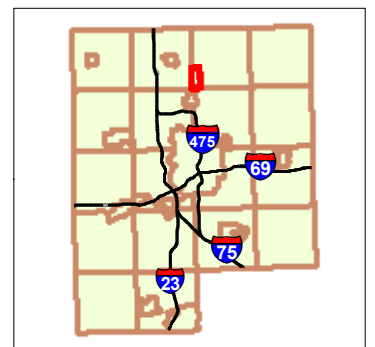
THIS MAP IS FOR GENERAL INFORMATIONAL PURPOSES ONLY
 The information provided on this map has been compiled from a variety of public records and data sources. Although it is believed to be reliable, its accuracy, completeness, or fitness for use is not warranted in any way. This map and any accompanying information is not a legally recorded document or survey and is not intended to be used as one. Genesee County assumes no liability for any claims arising from the use of this map.

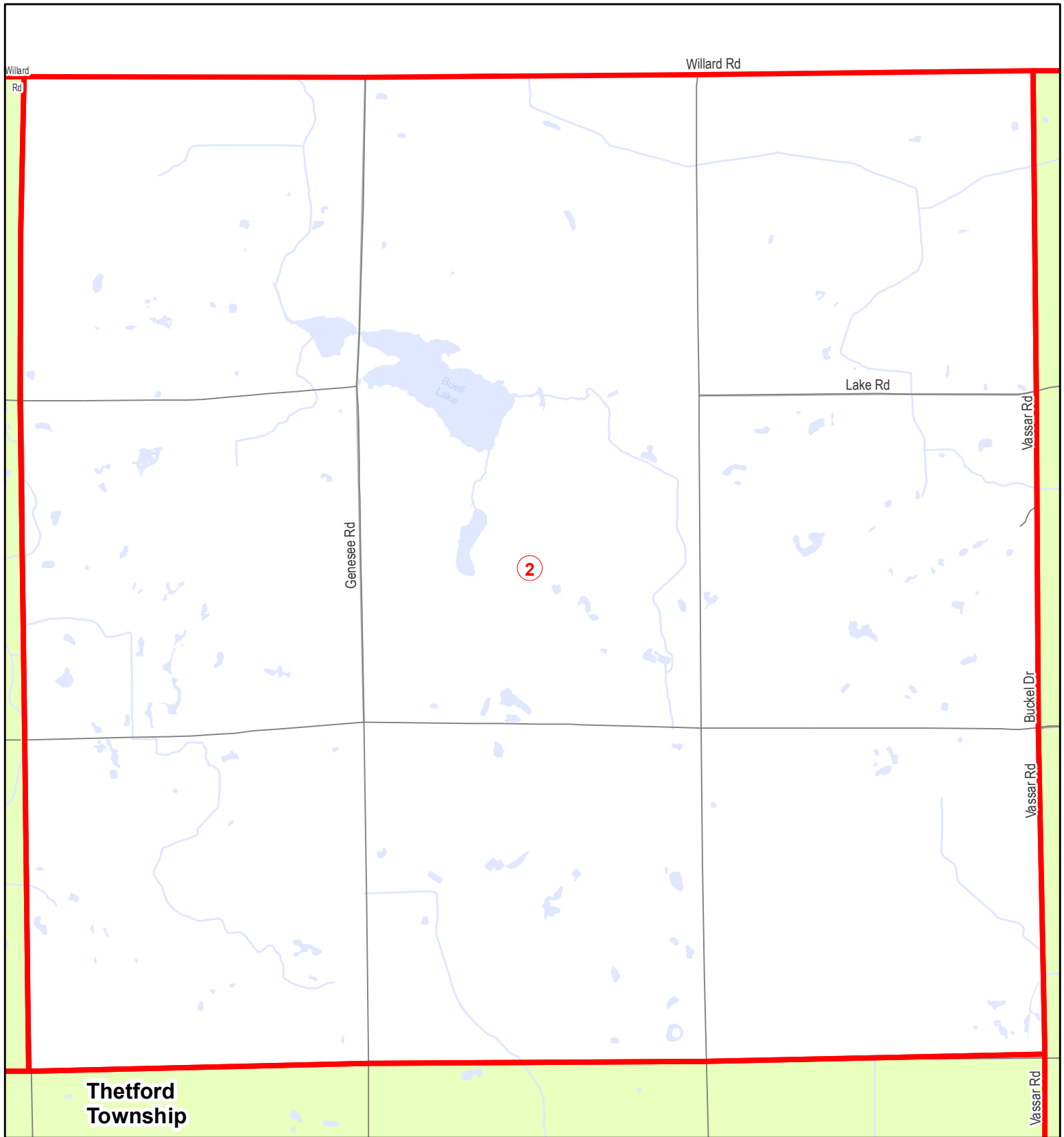


Legend

- 1 Precinct Number
- Precinct Boundaries
- Streets
- Hydrography

Date: 6/4/2014





Thetford Township - 2 Precinct Map



Genesee County GIS Department
 1101 Beach St., Room 210
 Flint, MI 48502
 Phone: (810) 257-3163 Fax: (810) 768-7954

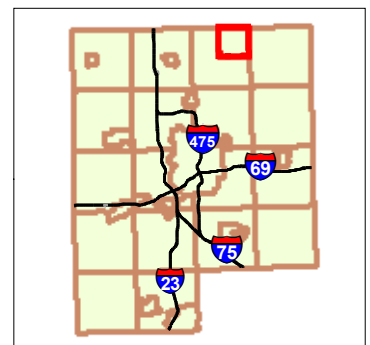
THIS MAP IS FOR GENERAL INFORMATIONAL PURPOSES ONLY
 The information provided on this map has been compiled from variety of public records and data sources. Although it is believed to be reliable, its accuracy, completeness, or fitness for use is not warranted in any way. This map and any accompanying information is not a legally recorded document or survey and is not intended to be used as one. Genesee County assumes no liability for any claims arising from the use of this map.

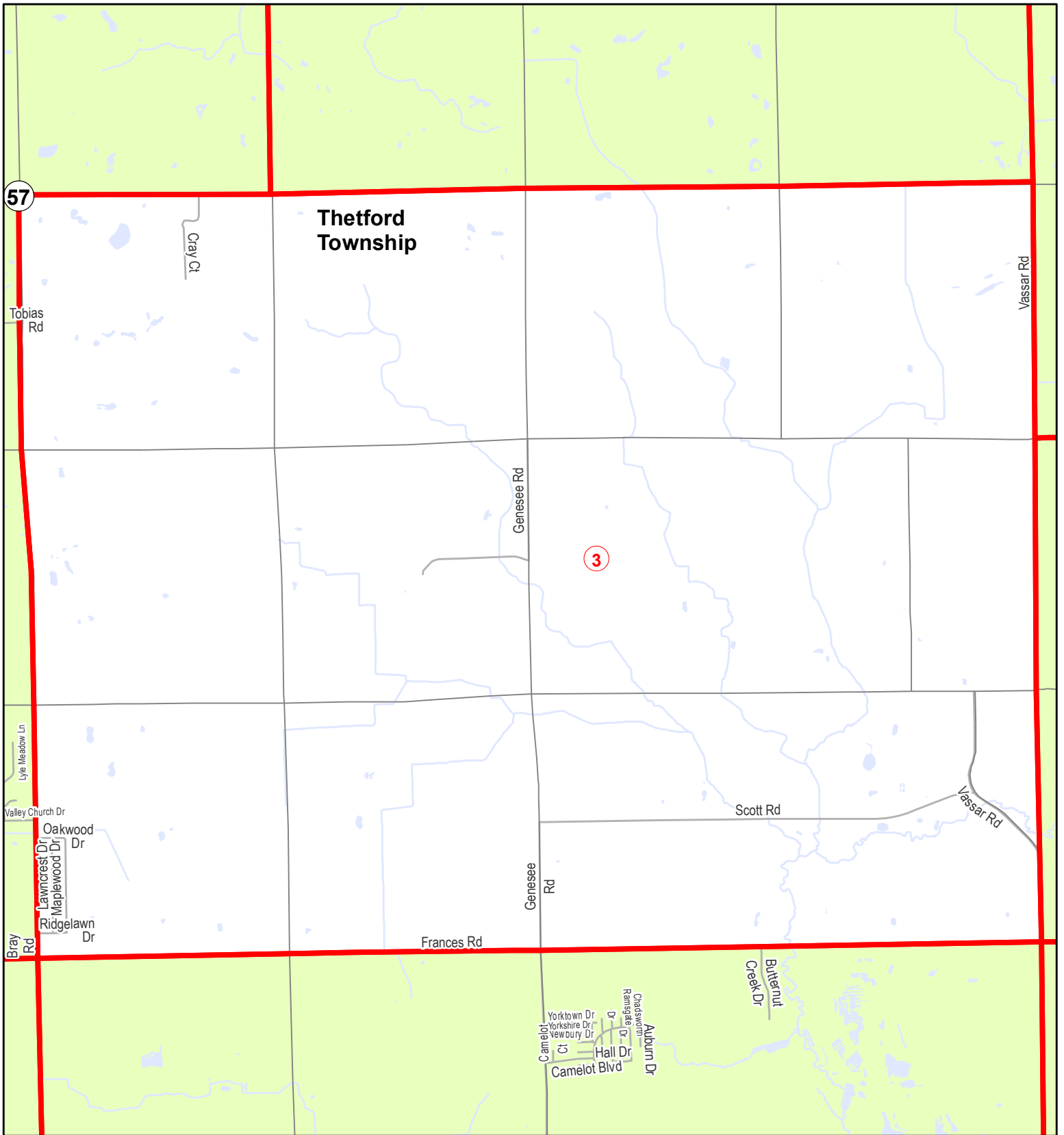


Legend

- 1 Precinct Number
- Precinct Boundaries
- Streets
- Hydrography

Date: 6/4/2014





Thetford Township - 3 Precinct Map



Genesee County GIS Department
 1101 Beach St., Room 210
 Flint, MI 48502
 Phone: (810) 257-3163 Fax: (810) 768-7954

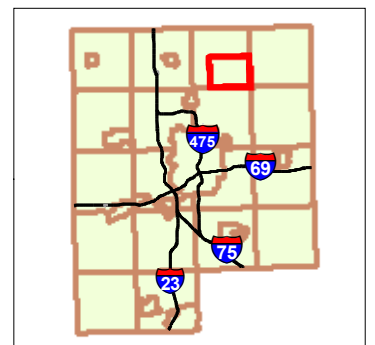
THIS MAP IS FOR GENERAL INFORMATIONAL PURPOSES ONLY
 The information provided on this map has been compiled from variety of public records and data sources. Although it is believed to be reliable, its accuracy, completeness, or fitness for use is not warranted in any way. This map and any accompanying information is not a legally recorded document or survey and is not intended to be used as one. Genesee County assumes no liability for any claims arising from the use of this map.

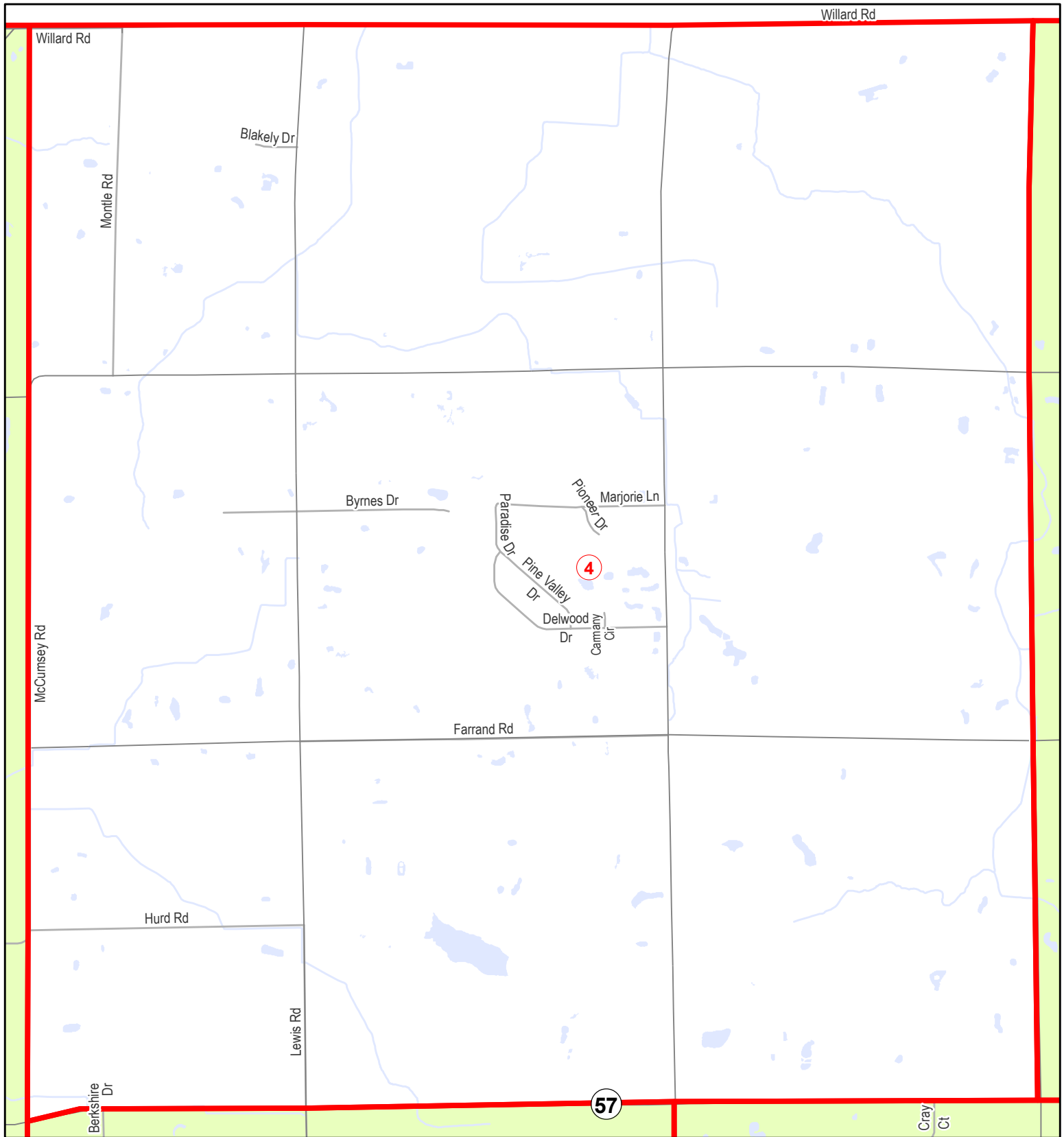


Legend

- 1 Precinct Number
- Precinct Boundaries
- Streets
- Hydrography

Date: 6/4/2014





Thetford Township - 4 Precinct Map



Genesee County GIS Department
 1101 Beach St., Room 210
 Flint, MI 48502
 Phone: (810) 257-3163 Fax: (810) 768-7954

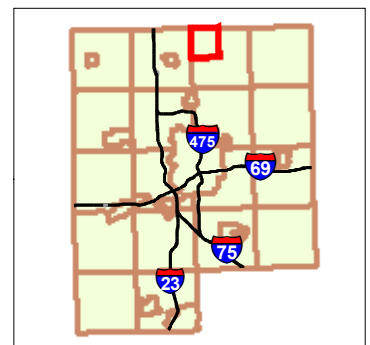
THIS MAP IS FOR GENERAL INFORMATIONAL PURPOSES ONLY
 The information provided on this map has been compiled from variety of public records and data sources. Although it is believed to be reliable, its accuracy, completeness, or fitness for use is not warranted in any way. This map and any accompanying information is not a legally recorded document or survey and is not intended to be used as one. Genesee County assumes no liability for any claims arising from the use of this map.

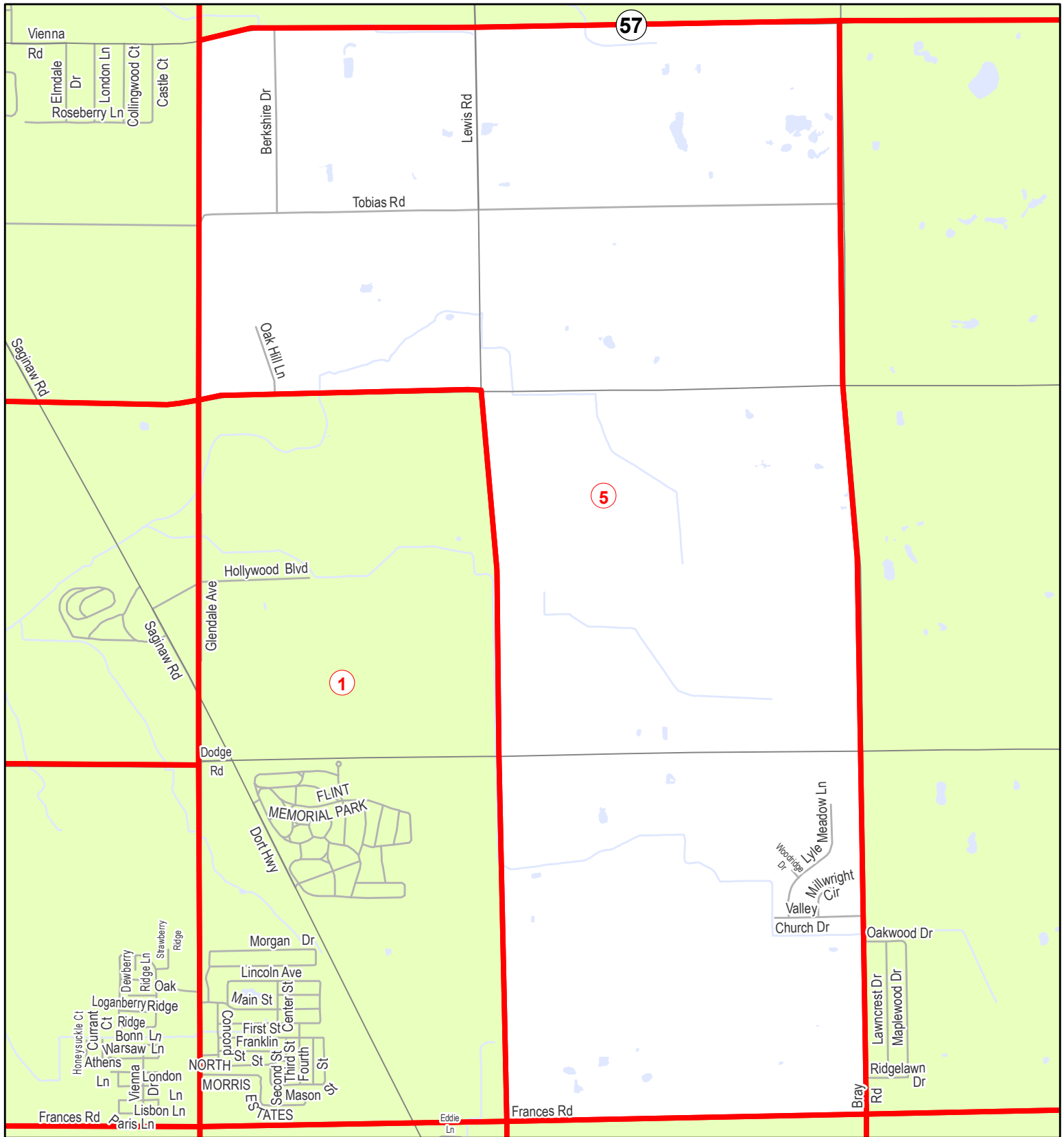


Legend

- 1 Precinct Number
- Precinct Boundaries
- Streets
- Hydrography

Date: 6/4/2014





Thetford Township - 5 Precinct Map



Genesee County GIS Department
 1101 Beach St., Room 210
 Flint, MI 48502
 Phone: (810) 257-3163 Fax: (810) 768-7954

THIS MAP IS FOR GENERAL INFORMATIONAL PURPOSES ONLY
 The information provided on this map has been compiled from a variety of public records and data sources. Although it is believed to be reliable, its accuracy, completeness, or fitness for use is not warranted in any way. This map and any accompanying information is not a legally recorded document or survey and is not intended to be used as one. Genesee County assumes no liability for any claims arising from the use of this map.



Legend

- 1 Precinct Number
- Precinct Boundaries
- Streets
- Hydrography

Date: 6/4/2014

