



# GENESEE COUNTY NEW ONLINE MAPPING SITE

## Genesee County FetchGIS

Genesee County is pleased to announce our new web and mobile mapping service called FetchGIS. This service offers an intuitive user experience with modern mapping and data discovery tools that make finding information easy.



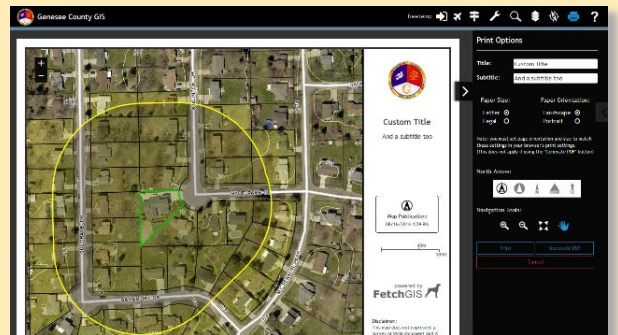
### Standard Features



- Explore GIS data from Genesee County including parcels, multiple years of aerial imagery, elevation contours and more!
- Measurement options for lines and areas with multiple measure units, and point coordinates
- Advanced graphic markup including text and shapes with options for angle and distance units and graphic editing tools
- Display current location on map for GPS enabled devices
- Works on desktops, tablets and smartphones

### Premium Functionality

- Access detailed land information for parcels
- Create custom maps, reports and notification lists with mailing labels
- Shareable map link with persistent graphic markups
- Premium functionality is offered on a fee per transaction basis so you are not committed to a subscription for only infrequent use



**TRY IT OUT TODAY!**



[app.fetchgis.com/genesee](http://app.fetchgis.com/genesee)  
[www.gc4me.com/departments/gis](http://www.gc4me.com/departments/gis)

